

## L.P. GAS CYLINDER INSTALLATION INSTRUCTIONS

### FORD FALCON UTILITY – REAR MOUNTED MODELS XH, AU, BA & BF (1996 – 2008)

This Automotive LP Gas cylinder must be installed in the vehicle in strict accordance with the latest requirements of AS/NZS1425. Any modifications to the cylinder will render the warranty null and void.

#### GENERAL CYLINDER SPECIFICATIONS:

DIAMETER : 375MM	LENGTH: 950MM
CAPACITY : 95L (Water)	L.P GAS CAPACITY : 76L
VALVE ORIENTATION : 30 degrees.	

#### VEHICLE MODIFICATION:

- Spare wheel re-location
- Exhaust modification

#### Installation:



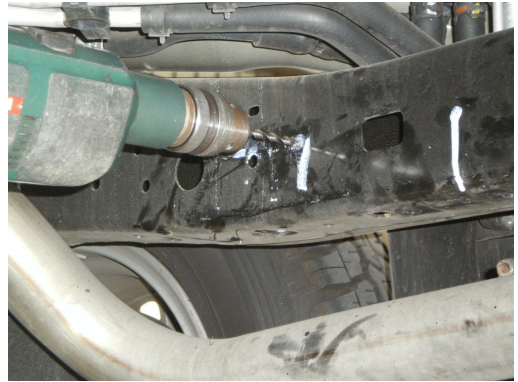
1. This cylinder is designed to be mounted underneath the vehicle in the position of the spare wheel, behind the rear differential.



2. Remove the exhaust system and cut away the spare wheel holder to create room for the LPG cylinder.



3. Position the cylinder under the vehicle ensuring the valves are facing the **rear** of the car. Loosely fit the attachment brackets and mark the mounting holes.



4. Lower the cylinder and drill the marked holes 11mm dia through the chassis. Re-drill the holes on the outer of the chassis 17mm dia to accommodate the crush tubes.



5. Place the LH chasis mount into position. Fit the spacer tubes into the chassis and square washers to the outer side of the chassis as shown.



6. Fit the RH chasis mount as previous step but fit the angled exhaust bracket to the outer rear mounting hole as shown. Tighten into position.



9. Jack the cylinder back up into position and bolt it to the chassis mount brackets fitting the heat shield to the right side bracket. Re-fit the new exhaust system within compliance of AS/NZS1425.